

Chalet

Spring/Summer 2011



Inside

Garden Faire
The Designer's Eye
Favorites

On the cover:
Rose "April in Paris"

Garden FAIRE

2011



In the Know

CHALET EVENTS CALENDAR

THE LIVING HOME

SATURDAY, APRIL 30, 8AM TO 6PM
SUNDAY, MAY 1, 9AM TO 5PM

A spring shopping preview with discounts and delights!

SHOP

Preview the newest and best: plants, garden supplies and accessories. Enjoy these specials exclusive to Chalet Valet members* for this weekend only...

20% OFF*

- Trees & Shrubs
- Chalet's Expert Selection brand Potting Soil, Mulch, Compost and Fertilizers
- Silk Flower Stems
- Glasshouse Ferns and Bromeliads
- Campania Tabletop Fountains

Plus 20% OFF Perennials & Roses (Saturday Only) and Annuals & Tropicals (Sunday Only)

AND select discounts in our new Lil' Diggers Section

**For Chalet Valet members. Anyone can sign up for this free rewards program. Note - excludes gift certificates, firewood, pet food, labor, delivery and landscape services work. Good only on in-stock merchandise.*



GROW

Get started now on an amazing garden this spring with all Chalet offers you – the best plants, expert advice, free diagnosis, many more special services and these very special Garden Faire activities:

Lectures

Saturday:

10 to 11am: Renee Shepard (Renee's Seeds), *Easy Gardens for Busy People*

1 to 2pm: Nicholas Staddon (Monrovia), *New Plants and Trends*

Sunday:

10 to 11am: Renee Shepard: *Gourmet Gardening*

1 to 2pm: Nicholas Staddon: *Latest Container Ideas*

Renee Shepard is a pioneer in introducing international vegetables, flowers and herbs to gardeners and restaurants.

Nicholas Staddon is the director of the New Plants Team at Monrovia.

Both Days:

• **Tool Sharpening/Sam Darin (11am to 3pm)**
\$9.99 per tool; first tool free for Chalet Valet members*

• Illinois Orchid and Midwest Bonsai Societies

Representatives from each society will answer your plant questions and talk about their groups.

• Designer Solutions (10am to 3pm)

Discuss solutions to your design dilemmas with our award winning landscape architects, perennial design and maintenance team and turf experts.

Go to www.ChaletNursery.com for more details

Sponsored by



EAT

• Grilling with Dave Esau (11am to 1pm)

Dave returns this year with special attention to cooking vegetables on the grill.

• Tea Forte tastings and other refreshments

Our fine line of fresh and uniquely blended teas from Tea Forte. They are perfect Mother's Day gifts.

• Treat Sampling for your Pet (12 to 3pm)

Sample High Hopes and Clancy's Cookies and see why Chalet's Pet Essentials won *Chicago Magazine's* "Pet Food Store" award.

PLAY

Children's Area

Your kids and grandkids will have a ball while learning about our natural world...

• Smarty Pants & Miss Dena (11am to 3pm)

The amazing balloon artist and delightful face painter return.

• Children's Strawberry Potting Party (9am to 3pm)

Help your kids decorate a terra cotta pot and plant a strawberry plant, grown at our own Chalet Farm, to take home and fruit.

• Author Ann Negro on her new book, *Our Super Garden: Learning the Power of Healthy Eating by What We Grow* (9am to 3pm)

Ann, a leading expert on school gardens and a local resident, shares tips from her new easy-to-read, fun book.

• Crooked Playhouse

Children will love playing house with this imaginative play area.

• Opening of the new Lil' Diggers Section

Be the first to preview our newest area, the Children's Garden Boutique, filled with the right size garden accessories. Get discounts on select Boutique merchandise this weekend only.

LECTURES

Fridays and Saturdays from 10 to 11:30am through April, and resuming again in June. Free. Go to www.ChaletNursery.Com/Education for details or sign up for Jennifer Brennan's email notices at www.ChaletNursery.com

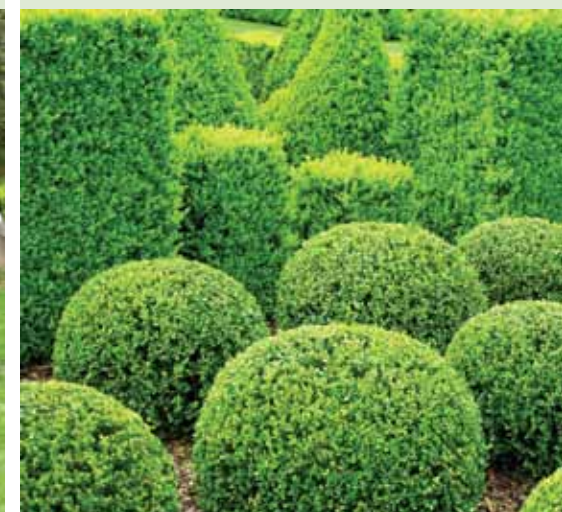
APR. 1 & 2: INSTANT GRATIFICATION SPRING CONTAINER – Get two seasons of enjoyment from this workshop. Pre-registration and materials fee of \$54.99 required. Call Jennifer at 847-256-0561 ext 230 or 225.



APR. 8 & 9: ABC's of SPRING LAWN CARE – Wake up your lawn for perfect performance during the growing season. With Bill Leuenberger, Chalet Soil & Turf Manager.



APR. 15 & 16: USING EVERGREENS FOR 365 DAYS OF COLOR – Add low maintenance texture and color to your garden year-round with Steve Mydelski, one of Chalet's premier evergreen purveyors.



MOTHER'S DAY

May 8

Chalet has an extensive array of exclusive and beautiful Mother's Day gifts.



ADOPT A DOG

June 11, 11am to 2pm.

Rescue and/or just pet some loveable dogs, available for adoption from area shelters.



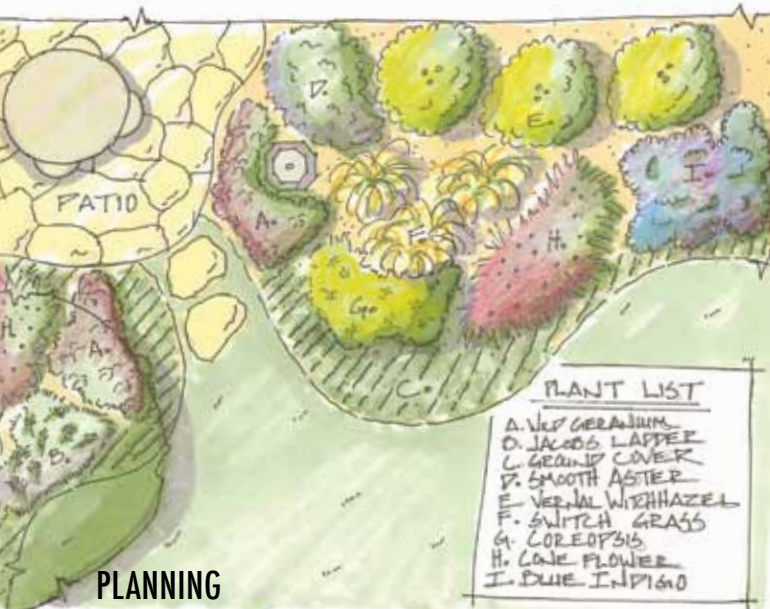
In the Garden The Designer's Eye

LANDSCAPE DESIGNERS AND MIXING IT UP WITH NATIVES

By Adam Sturtewagan, Chalet Landscape Designer

It won't be long before you see the bell shaped, blue Squill flowers popping up in both desired and undesired places. This harbinger of spring reminds us that it's time to plan your garden.

Would you expose an "open-air room" with drifting perennials under a tree canopy, enclose a small space with privacy shrub screenings, or create an outdoor entertainment area? Whatever your goal, start with a design plan. If you're not sure about this, it pays to involve a landscape architect or designer; costly mistakes are made without one.



PLANNING

After the designer has listened to and evaluated all of your needs, s/he will have a good platform to work from.

The first step is collaboration and brainstorming. A site analysis is then conducted, best done using a plat of survey. What are the existing plants, soil type, property lines, easements, and other features on the property? All information is translated onto a working base map and then into a concept drawing, eventually transforming into your master design plan. The plan typically proposes special features such as patios, retaining walls, outdoor kitchen, lighting and irrigation and a detailed rendering of proposed plants. Additional information may be provided such as detailed construction methods and plant sizing and space requirements. Maintenance issues, such plant watering schedules, are reviewed during installation or upon job completion.

TIMING

Often project timelines range from weeks to months to transition from design phase to permitting and approval. In our area, for instance, drainage issues are frequently addressed and occasionally require review board submission.

If you wait until May or June to plan, your plantings may suffer. Plants, like all living things, have certain growing requirements to maintain a healthy life. They work twice as hard to establish during the hotter summer. This stresses plants, whereas spring's cooler temperatures allow plants to acclimate faster.

PHASING

If planning an entire design for the property is too much to take on at once, consider phasing the project into smaller sections. Pieces of the plan can be installed throughout the year or over several years. This allows you to become familiar with your landscape over time as well as build a relationship with your design professional. And it often makes better sense economically.

PLANT CONSIDERATIONS

Part of good design is considering environmentally friendly options. One way to address this is with native plants, or plants that occur naturally within your region or habitat.

Unfortunately there's a misconception that native plants look "messy and weedy." If installed and maintained properly, natives are, in fact, stunning. And there are many varieties to choose from. But, as there is no such thing as a no-maintenance plant, even natives require some maintenance.

Another misconception is that natives work better in larger scale restoration projects. Not true! When properly sited, native plantings can be beautifully applied at a residential scale. Renowned Landscape Architect Jens Jensen was fond of natives. Indeed, a major trend (or re-emergence) in American landscaping is towards naturalistic patterns, which natives satisfy perfectly. Natives produce spectacularly beautiful landscapes and also landscapes that tell the story of our region.

Not every job warrants the use of native species. As designers, we help bring your dreams to life, but also add much more with the right plant selections. We provoke your imagination and creativity and bring sustainability into your landscape.

Contact our award winning landscape division:
847.688.0561



BENEFITS OF USING NATIVE PLANTS

- Maintain a healthy ecosystem by creating wildlife habitat, attracting songbirds, butterflies and pollinators
- Source of food
- Strengthen biodiversity
- Lower maintenance and watering with proper species selection
- Adapt to a wide range of soil conditions and climate zones
- Underline a sense of regional place

A few native plants to try:

1. *Viburnum prunifolium*, Blackhaw Viburnum: white flowers in spring and great fall color, fruit will attract birds, terrific accent shrub.
2. *Hamamelis vernalis*, Vernal Witchhazel: red or yellow strap like yellow flowers in early season, great screening hedge or as a small tree, brings structure to the garden.
3. *Panicum virgatum*, Switchgrass: upright and arching, color ranges from purple to red late in season, works great in massing, can have nice winter interest.
4. *Aster laevis*, Smooth Blue Aster: Tiny purple-blue flowers that last late into the season, upright form, great in perennial borders.
5. *Clethra alnifolia*, Summersweet Clethra: fragrant white flowers in summer, with capsule fruit that persists through winter, prefers moist soil and slight shade.
6. *Coreopsis grandiflora*, Tickseed: yellow disk like flowers, flowers much of the summer, many cultivars available.
7. *Monarda didyma*, Beebalm: Scarlet red flowers, fragrant foliage, prefers moist soil, may spread in shadier spots.
8. *Baptisia australis*, Blue Indigo: easy to establish and hardy, indigo blue flowers during spring, ornamental fruit pods create late season interest.
9. *Geranium maculatum*, Wild Geranium: excellent low, woodland perennial, large purple to blue flowers.
10. *Polemonium caeruleum*, Jacob's ladder: multi colored, cup shaped flowers, prefers shade, foliage is unique with a ladder-like formation.



In Store

SPRING PLEASERS



CHIC CONTAINERS Spring flowers have more impact than any other season because they're a primary anecdote to spring fever. The blues, pinks, purples and yellows of their nodding heads bring life to your garden and containers. Impress your visitors this year with your style by using a flowering tree, shrub or topiary as the centerpiece of your container. Small crabapples, magnolias and azaleas make unique and elegant spring statements. Visit our Wilmette store (847.256.0561) to create your own or take home a pre-made container, or call our Specialty Garden (847.688.0561) team to come to your home to customize your containers and beds this spring.

IT'S BONIFIED Among Chalet's many services is free microscope diagnosis of your plant problems. But sometimes customers enjoy solving the puzzle themselves. Check out our Bonified touch-screen monitor to find solutions to insect and disease problems. Available in our store's Plant Health Care area.



MINI HOSTAS Adorable. Perfect for containers, for tucking by the front door garden or peering out from patio side. Mini hostas, with leaf sizes no larger than 6" and mounding no larger than 12", fit in anywhere. Chalet has a large selection including (we love these names); Teaspoon, Teeny Weeny Bikini, Country Mouse, Cracker Crumbs, Dragon Tails, Elite, Corkscrew, Spartan Arrow, Slim and Trim, Tears of Joy. Chalet Farms produces these excellent varieties; Cheatin' Hearts, Dixie Chicks, Dew Drops, Frosted Mouse Ears, Little Wonder and Pandora's Box.

THE BRITISH INVASION From the world's greatest gardeners come Burgon and Ball tools, melding craftsmanship function with superb style. The pruners and shears offer more control, durability and ergonomic support than almost any other. The long handled spade has all metal support pressure points and is gorgeous besides. The line also includes useful garden jars and original English trugs. Inspired by this British company's quality, our buyers are also bringing you Burley Clay's mix-and-match birdbaths, containers, clay toppers, and Garden Glass Art, suitable for hanging or using as bird baths, each one a one-of-a-kind handmade piece.



NEW HYDRANGEAS Midwesterners are lucky as the annual breakthroughs in our glorious show-stopping hydrangeas are perfect for our climate. This year we introduce the totally unique 'Great Star' with white, wavy, star shaped flowers, and 'Bella Anna,' the newest pink Annabelle with more flowers and stronger stems. Plus it blooms and re-blooms from summer through fall. Both are effortless to grow.



In Store

A BRIEF LOOK AT MORE NEW SPRING ARRIVALS

1. Al Fresco Accents All new ceramic fountains, lit planters, glazed planters and umbrella planters, to grace your outdoor patio or dining area.

2. Old Lithograph Stones Completely unique. Each is from pages of a book of rare German family crests. Use for indoor décor, to accent the garden or as stepping stones.

3. Jewels Robin Goodfellow's jewelry is elegant and original, inspired by dance, Shakespeare, music and the natural world.

4. Lilac 'Bloomerang' The first-ever re-blooming lilac. Introduced last year but very hard to get or find. Until now, at Chalet.



5. The Journey Collection Soaps, candles, diffusers and a new concept: the room and linen mist combo. In lush scents of wildflowers and water lotus cooled with dewy bamboo or creamy musk and jasmine with a hint of vanilla.



6. NEW BOOK NOOK LOOK

Check out our renovated Book Nook with new titles for gardening, decorating and children, plus a refreshed look.



7. Celtic Design Inspired by Ireland's myths, legends and history, where these gift crosses and stones are made. Each made of pure cast iron or bronze, naturally aging and with its own special story.



8. Black Velvet Amazing new petunia that sets off any container combos. Other hot new annuals this year are, 'Blue Frost,' 'Apricot Shades,' 'Mariposa Peach Shades' pansies; 'Silky Deep Red' butterfly plant; 'Celebrity Series' hollyhocks and 'Bandana Cherry Sunrise' lantana.



9. Tabletop Fountains Classic terrace designs with aged patina yet a modern sensibility. Very affordable mini fountains are soothing indoors or out.



10. Melamine Servers The highest quality melamine dinnerware you will find. Beautiful colors, vibrant designs and so strong it resists breakage and damage.



11. Spartina Style Brand new bags, scarves and belts inspired by the natural beauty of the South Carolina islands.



12. Provençal Decorative Ceramics Stunning heirloom pieces conjured from Provençal's grape, lavender, rose and sunflower fields. Perfect for vases, serving or displaying fruit.

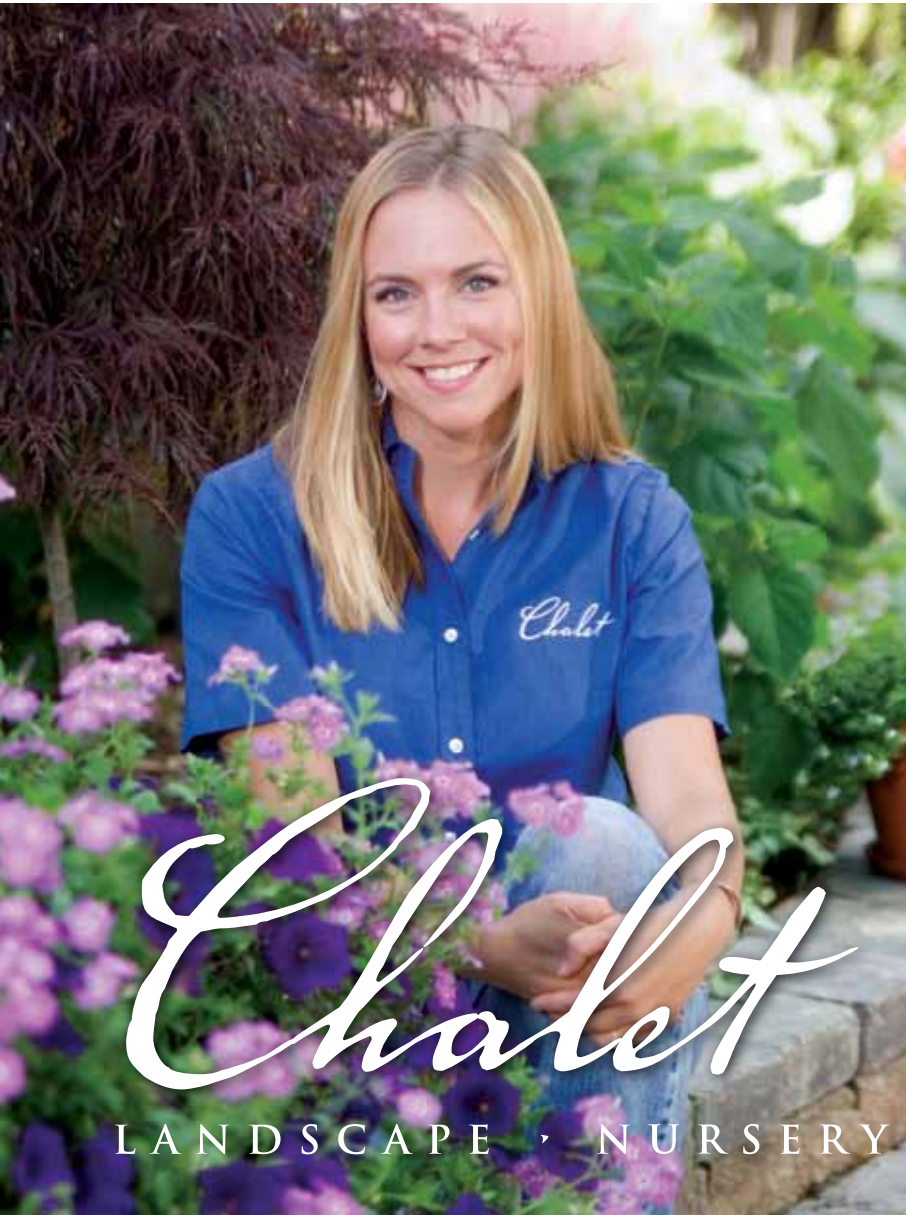
Chalet

LANDSCAPE · NURSERY · GARDEN CENTER

Growing Greatness Since 1917

3132 LAKE AVE
WILMETTE, IL 60091

PRINTED ON RECYCLED PAPER Design: Wendy Griffiths Design; Photos courtesy of: Jennifer Brennan, Jim Broccolo, Robin Carlson, Todd Fedler, Carol Freeman, Danielle Kiefer, Ian Wagner
www.ChaletNursery.com Contact us: Newsletter@ChaletNursery.com. 847.256.0561.



PRO OF THE YEAR

Chalet's Specialty Garden Services' Lindsay Sager is the Illinois Certified Nursery Professional of the Year! Chalet has more ICN Pros overall (2 dozen) and more ICN Pros of the Year than anyone else. "This is a prestigious award, and much deserved," says Larry Thalmann III, president and third-generation owner of Chalet, who adds that Sager joins Chalet's Tony Fulmer, retail manager, and Robert Milani, senior landscape architect, in receiving the award. Both are previous ICN Pro of the Year award winners.

SUPER SERVICE AWARD

Chalet received the top prize as an Angie's List Super Service Provider for the Landscaping and for Greenhouses/Nurseries categories. Members rate their service providers. Only the top 5% of all companies on Angie's List receive this award.

LANDSCAPE EXCELLENCE

On March 11, Chalet was honored at the Illinois Landscape Contractor Association's dinner with a Silver Award of Excellence for our "Landscape Experience" event last September.

LANDSCAPE · NURSERY · GARDEN CENTER